

## Parasyn Controls

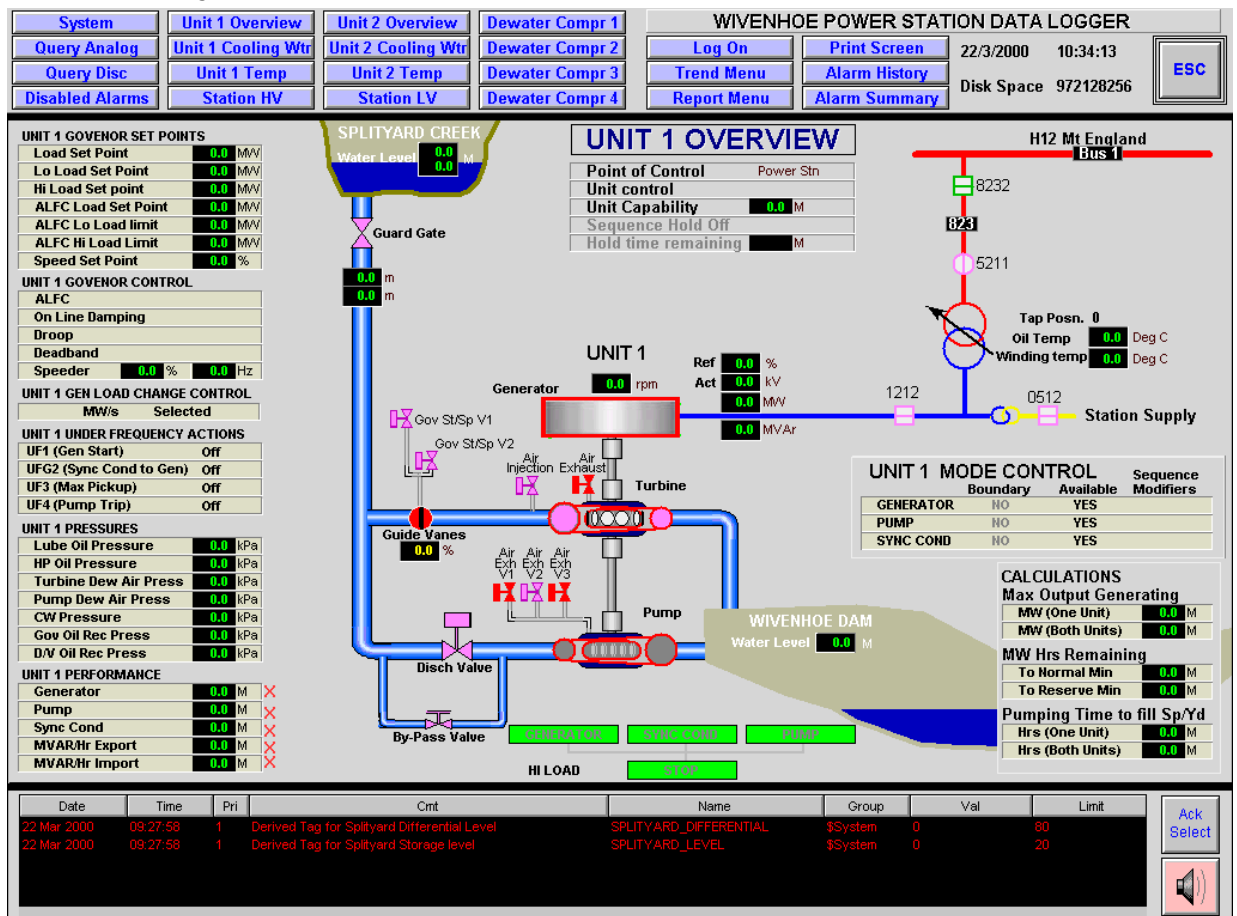
# Tarong Energy

## Wivenhoe Power Station Data Logger

### High speed data logging and data storage

Wivenhoe power station has two of Australia's largest Kingfisher RTU installations. Part of the system incorporates high-resolution time & date stamped sequence of events recording. This is achieved using hardware that attaches the time & date of occurrence of a digital input change down to 1-millisecond (+-) resolution. The logged data is then retrieved from the RTU processor using the Wonderware IO Server. Logged data and other real time data is ultimately presented back to the HMI for animation and alarms. Data storage is achieved using the Wonderware Industrial SQL Server. High-resolution time & date information is retained using the InSQL Server product.

Figure 1. - Wivenhoe Power Station Unit 1 Overview Mimic



SOE (Sequence of Events) data is used to determine the order of equipment alarm and status information. Ultimately this is used to enhance fault diagnosis and thus minimise plant down time.